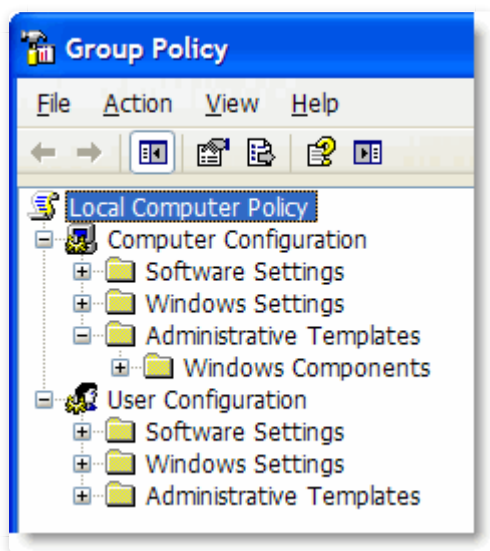


Restore Missing Folders to the Group Policy Editor in Windows XP



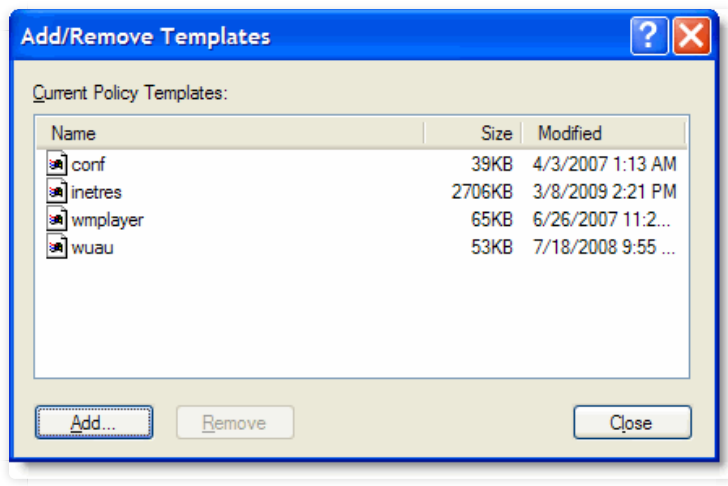
When you open the Group Policy Editor in Windows XP Professional, some of the categories under Administrative Templates may be missing. For example when you expand Administrative Templates, the **System** category may be missing. This article provides information on how to restore the missing folders to the Group Policy Editor.



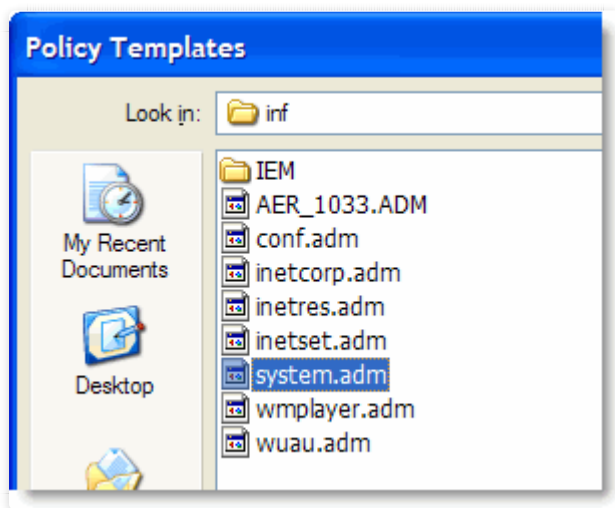
Add the Missing ADM File

Method 1

1. Open the Group Policy Editor (gpedit.msc)
2. Expand **Computer Configuration**
3. Right-click Administrative Templates, and click **Add/Remove Templates...**



4. Click **Add...**



5. Select the file **system.adm** and click **Open**
6. Click **Close**.

Method 2

Using Windows Explorer, copy the file **system.adm** from the C:\Windows\INF folder to C:\Windows\system32\GroupPolicy folder. In a standard Windows XP installation, the target folder has the following ADM files by default:

- conf.adm
- inetres.adm
- wmplayer.adm
- wuau.adm
- system.adm

Copying the missing file from the ADM folder should restore the missing folder in the Group Policy Editor. If that does not work, make sure that filtering is turned off.

Turn Off Filtering

1. Expand **Computer Configuration**, and select **Administrative Templates**
2. From the View menu, click **Filtering...**
3. Uncheck the following checkboxes:
 - Filter by Requirements information
 - Only show configured Policy settings
4. Click OK.

